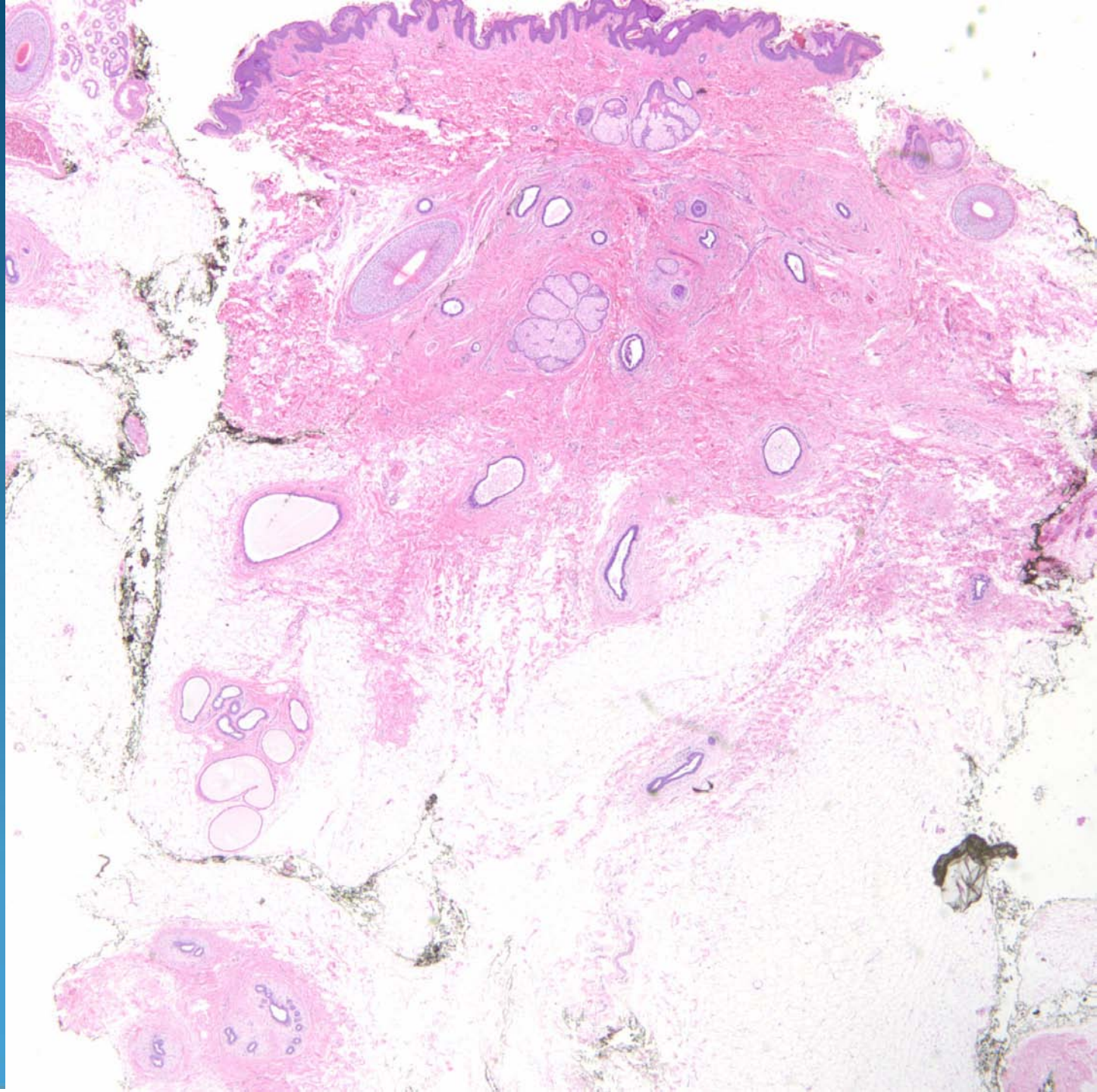
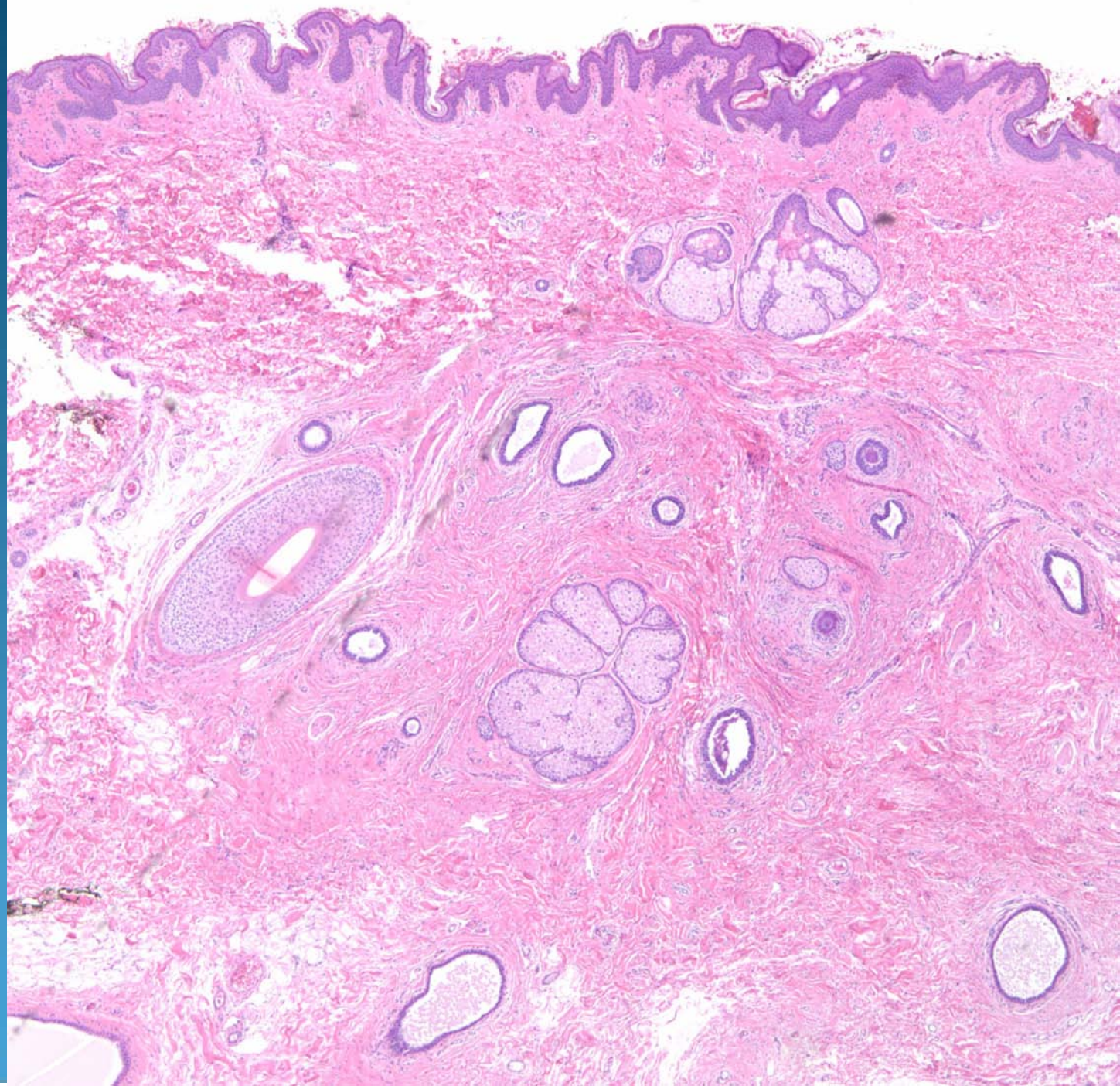


# Dermatopathology Slide Review Part 52

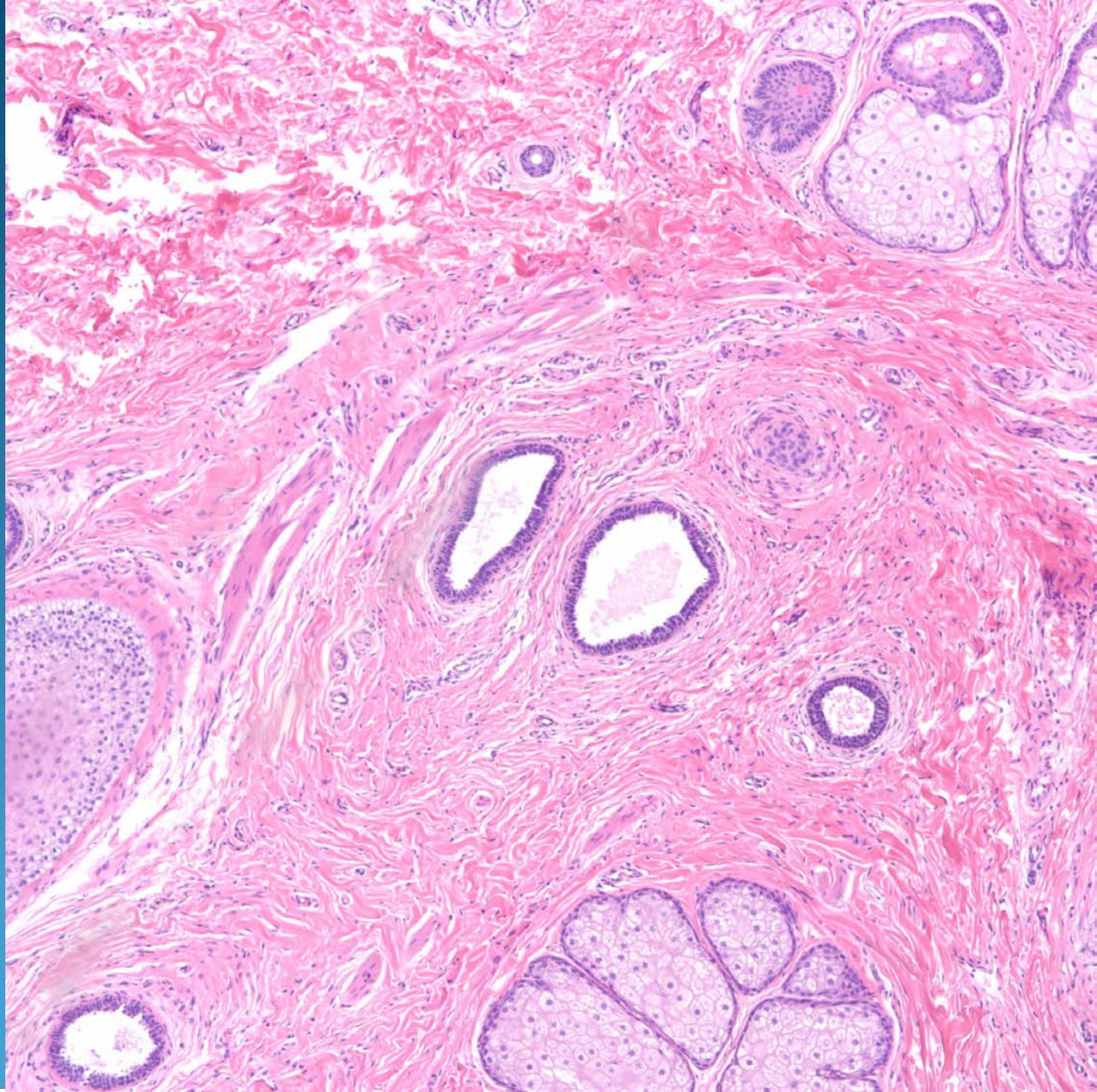
Paul K. Shitabata, M.D.  
Dermatopathology Institute



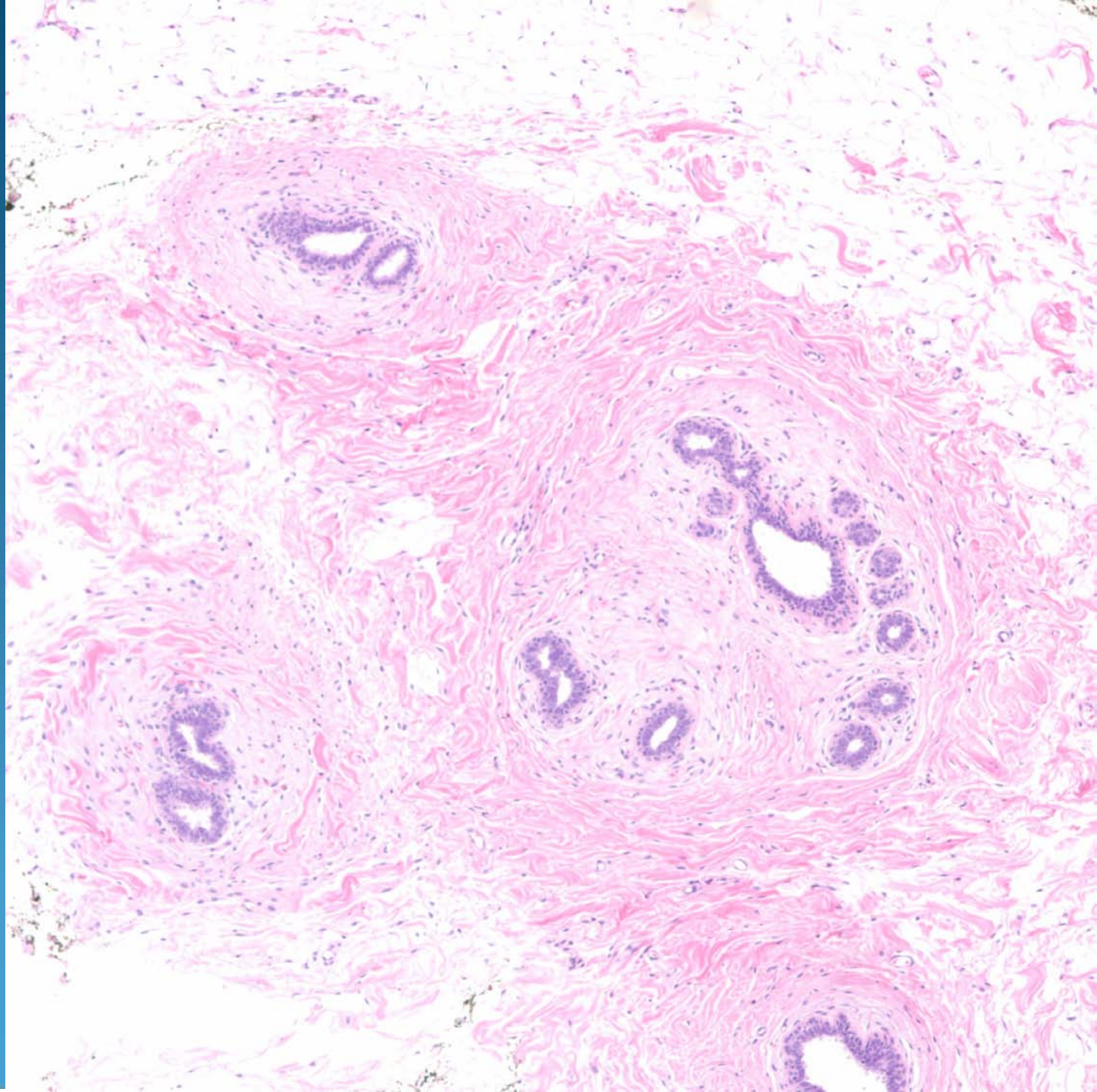




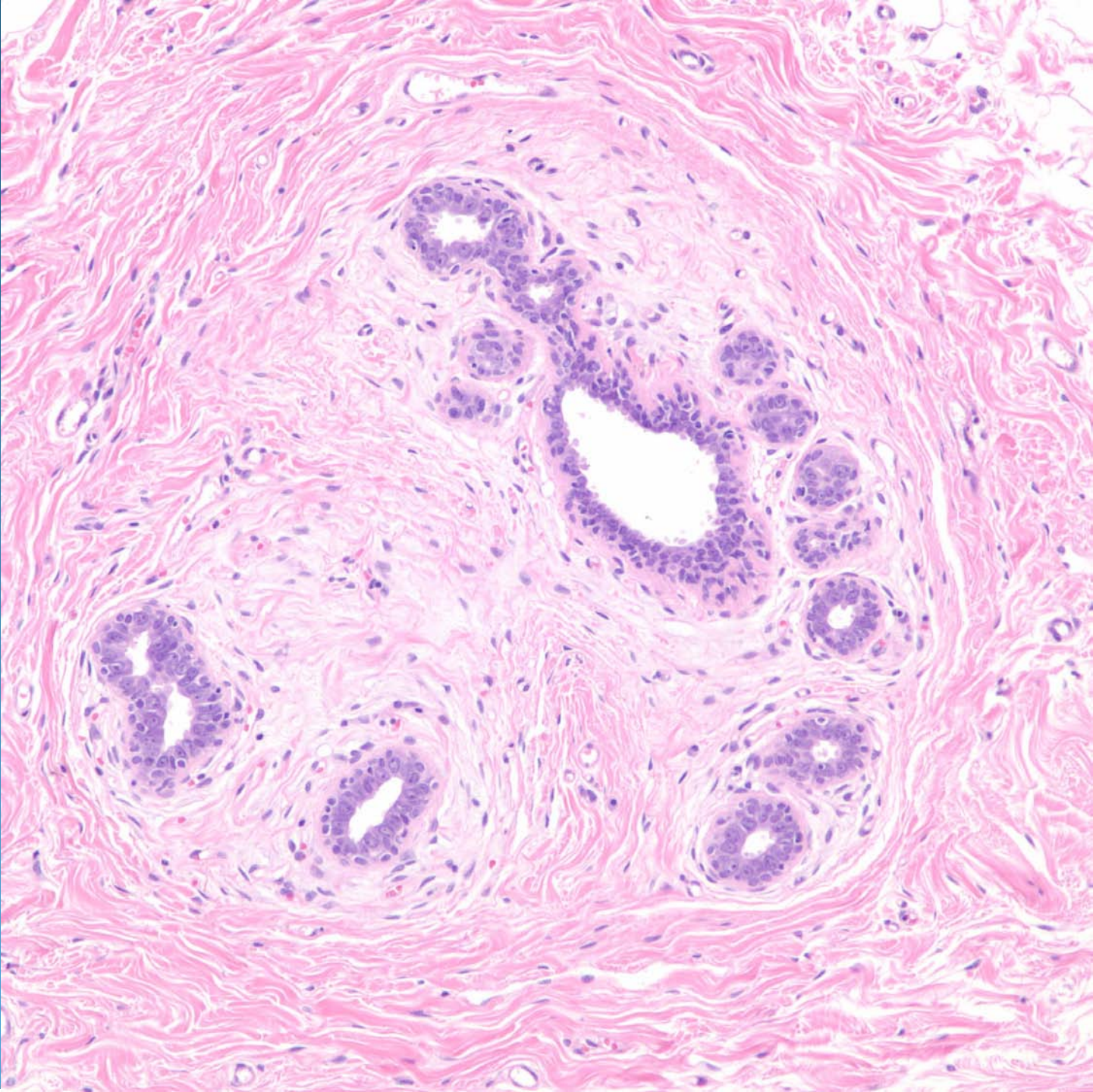






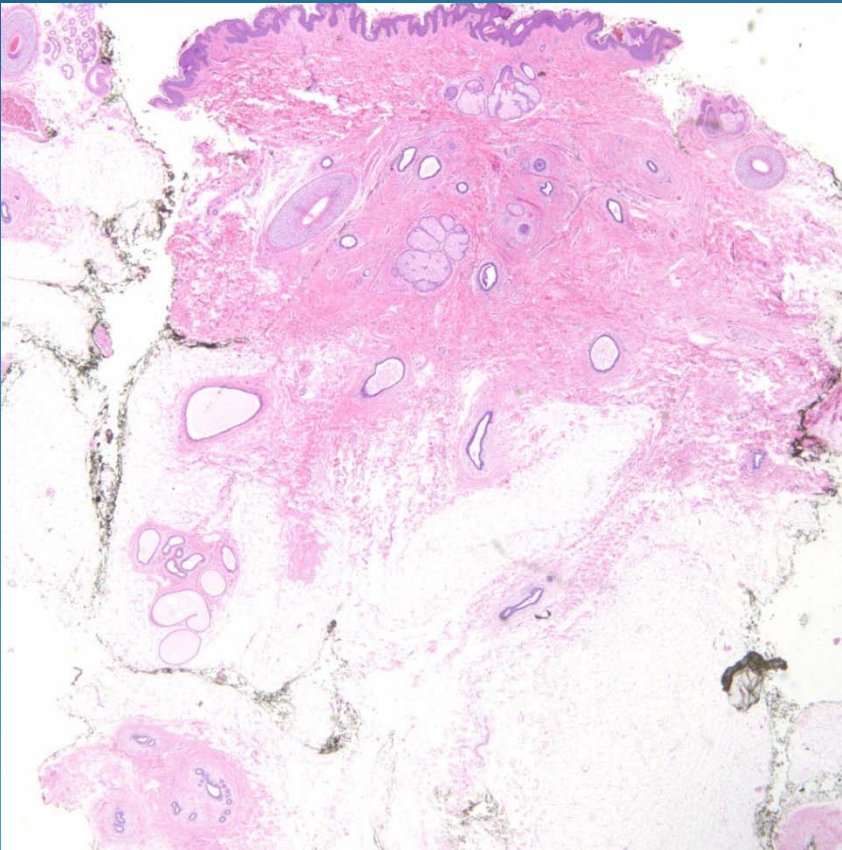






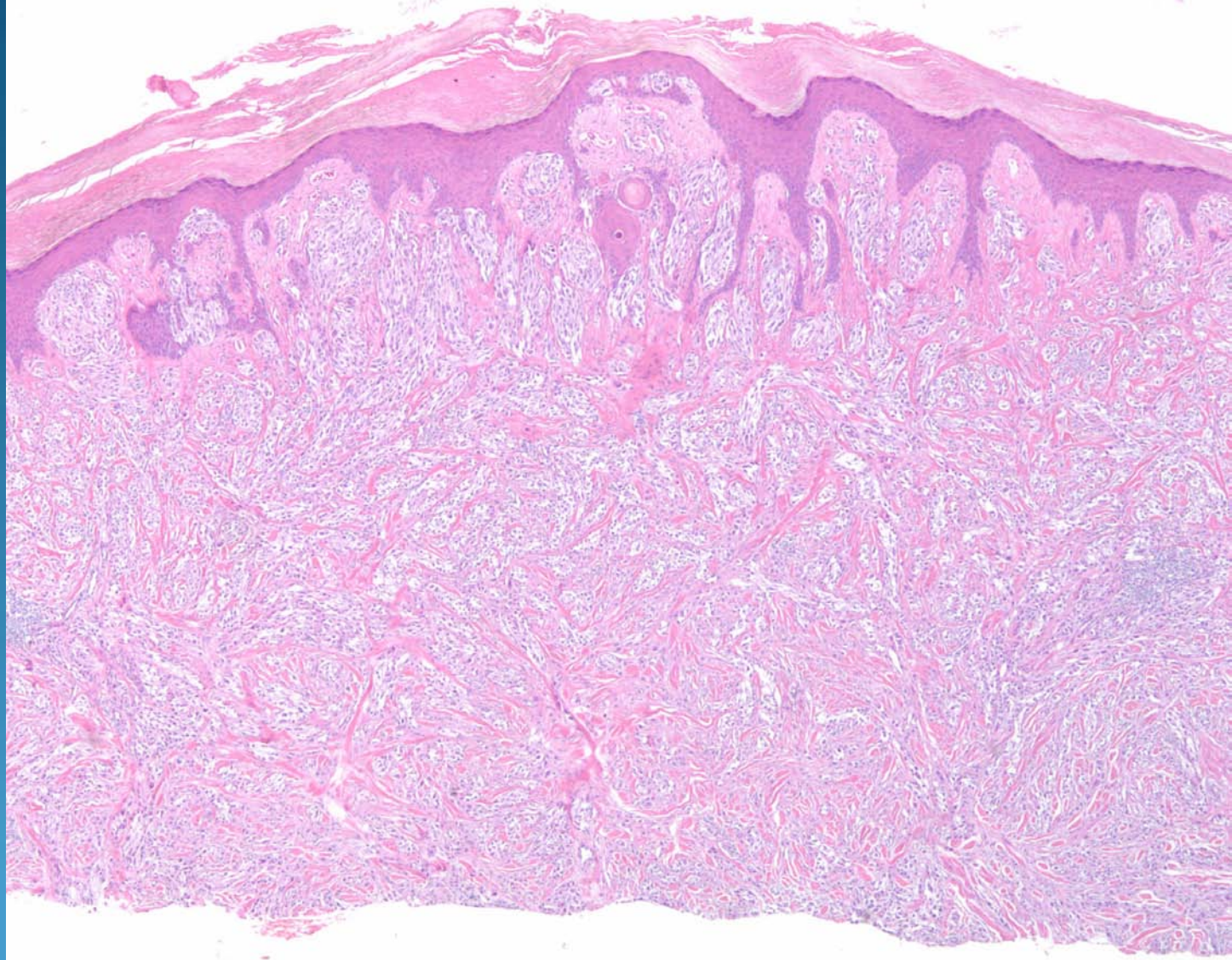
# Accessory Breast Tissue

# Pearls

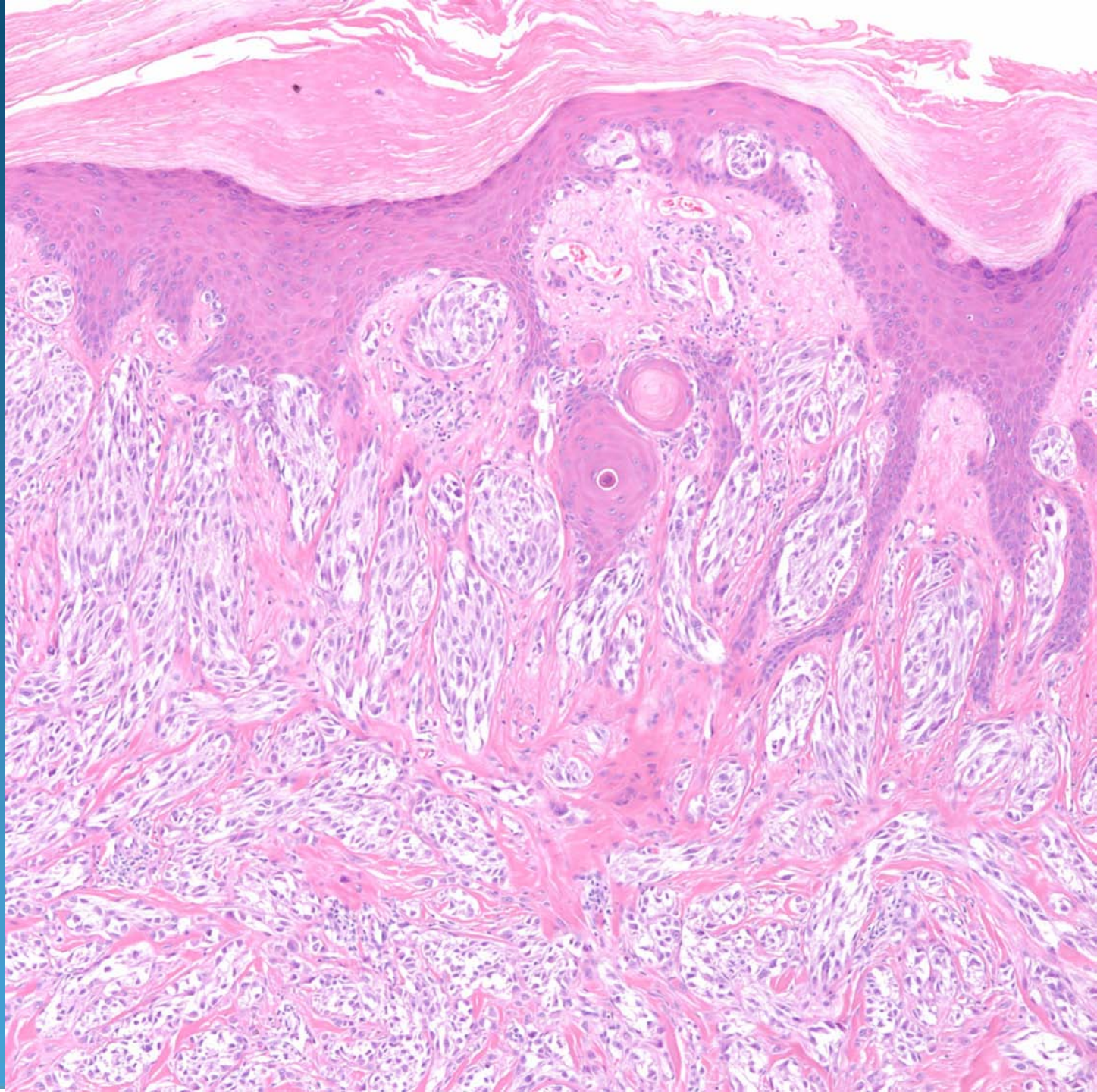


- Benign breast glandular tissue extending into dermis
- If associated with smooth muscle bundles, consistent with accessory nipple

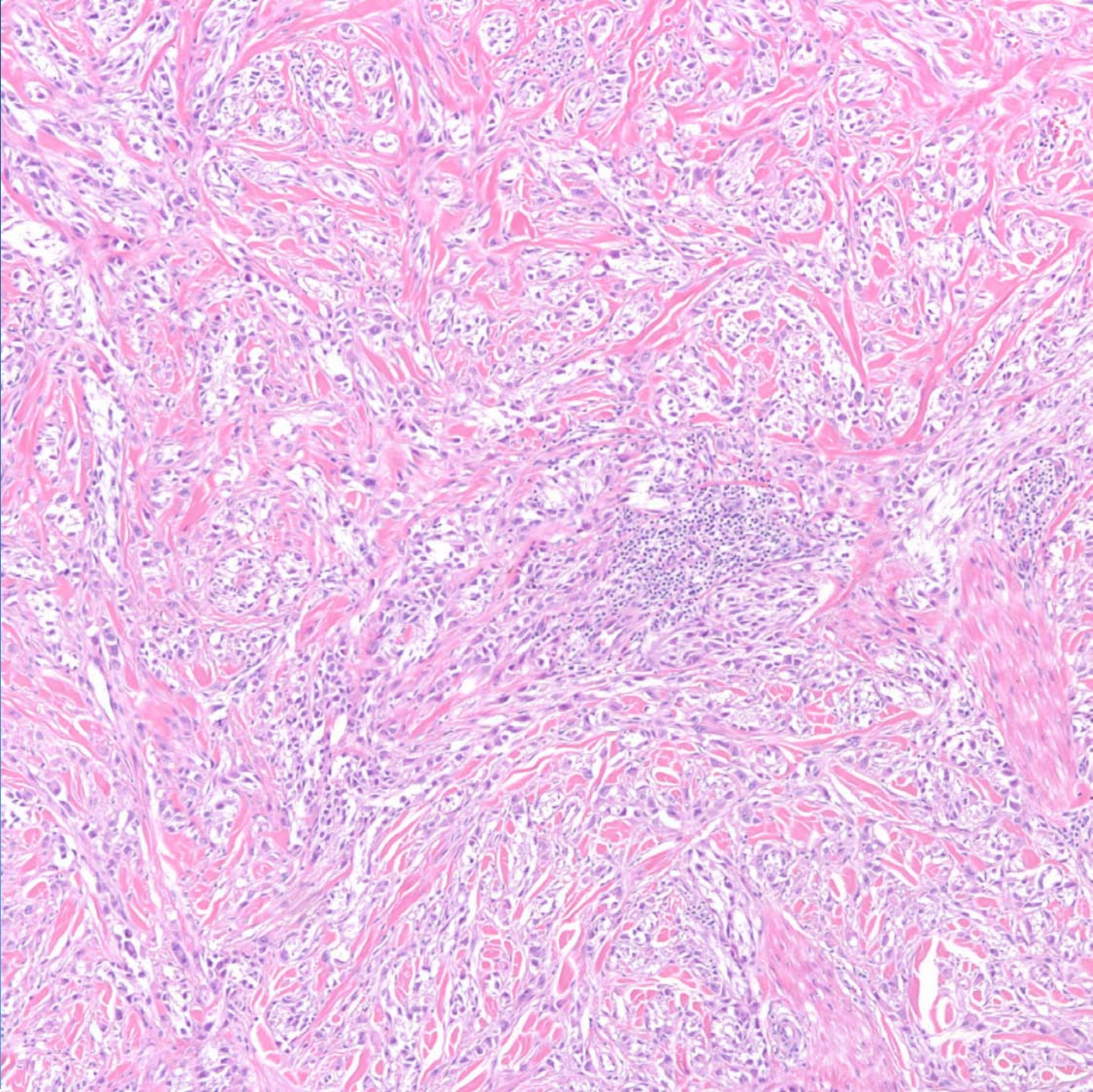




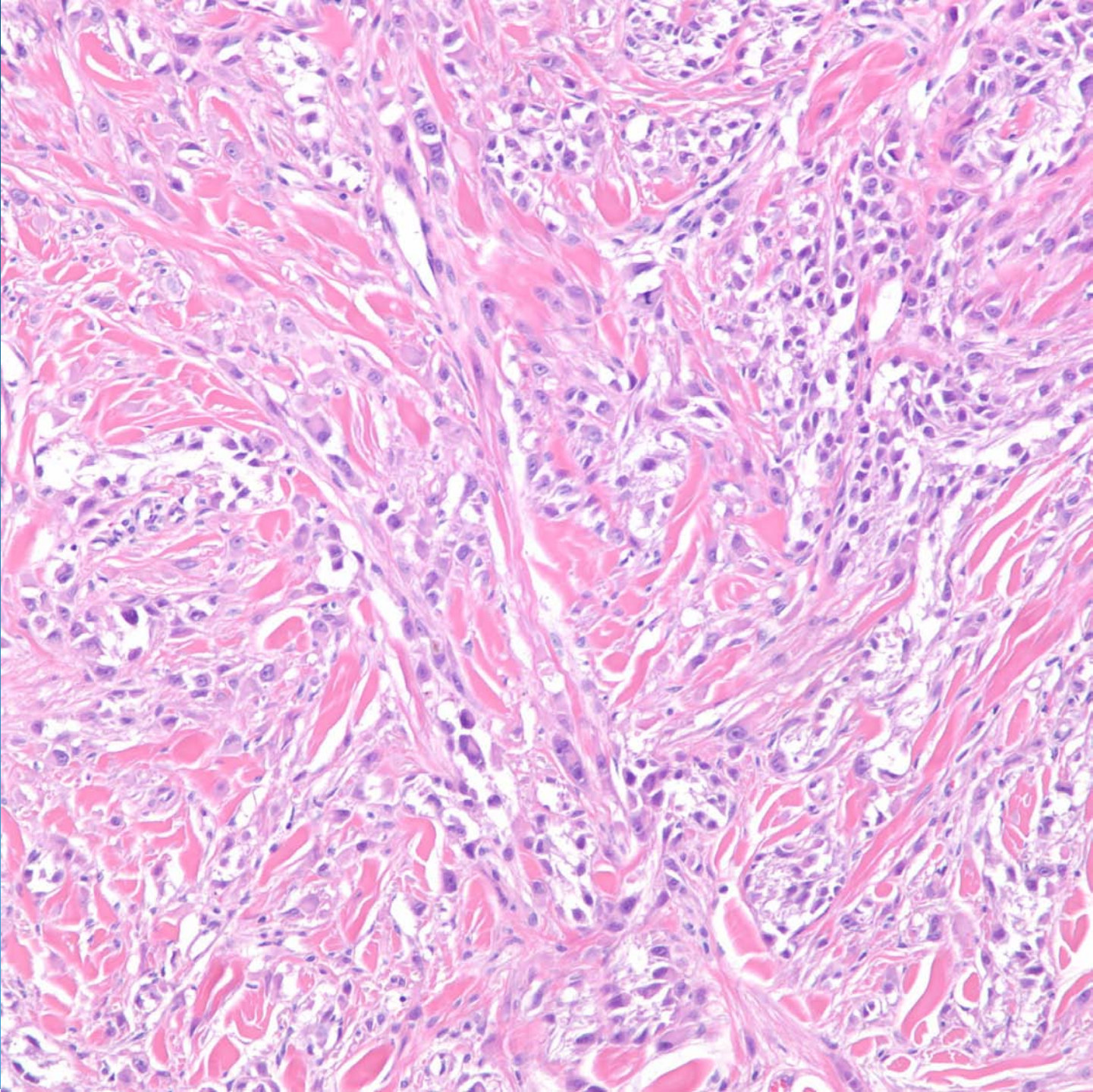




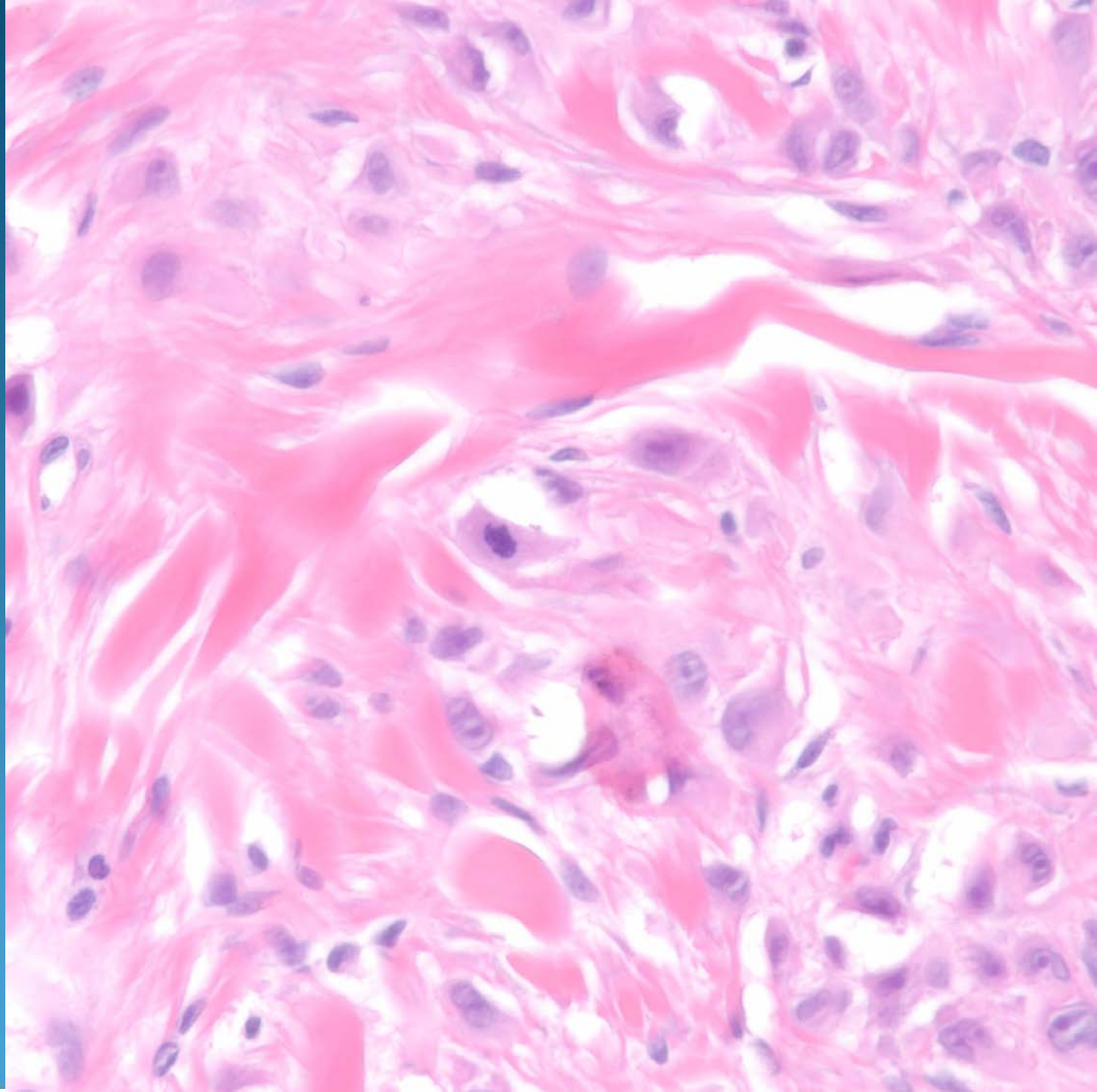








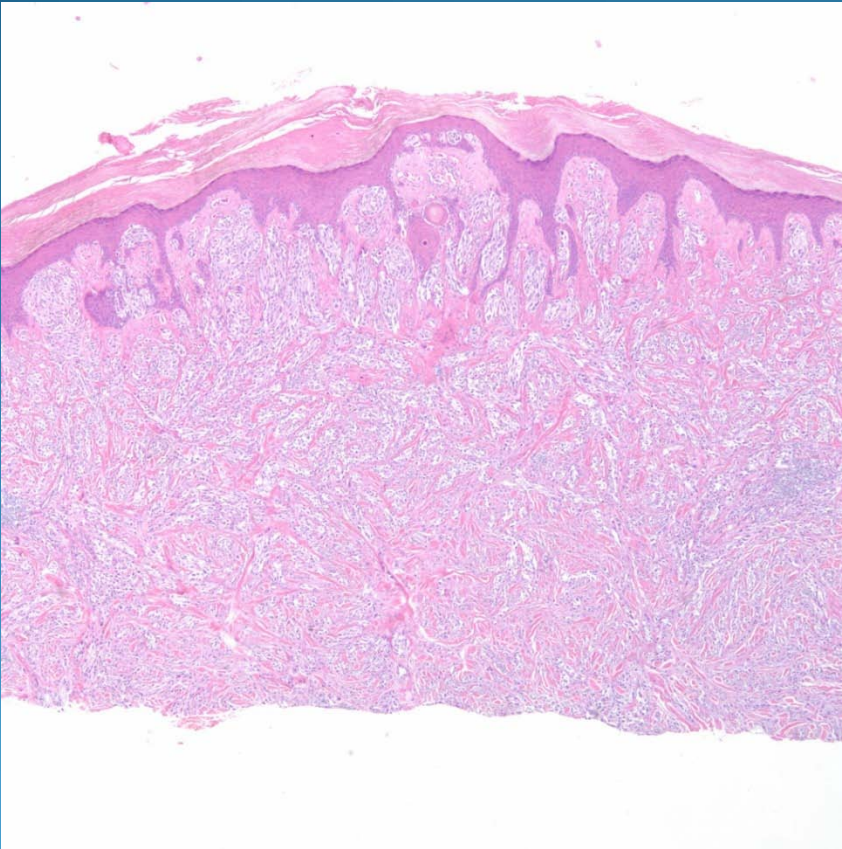




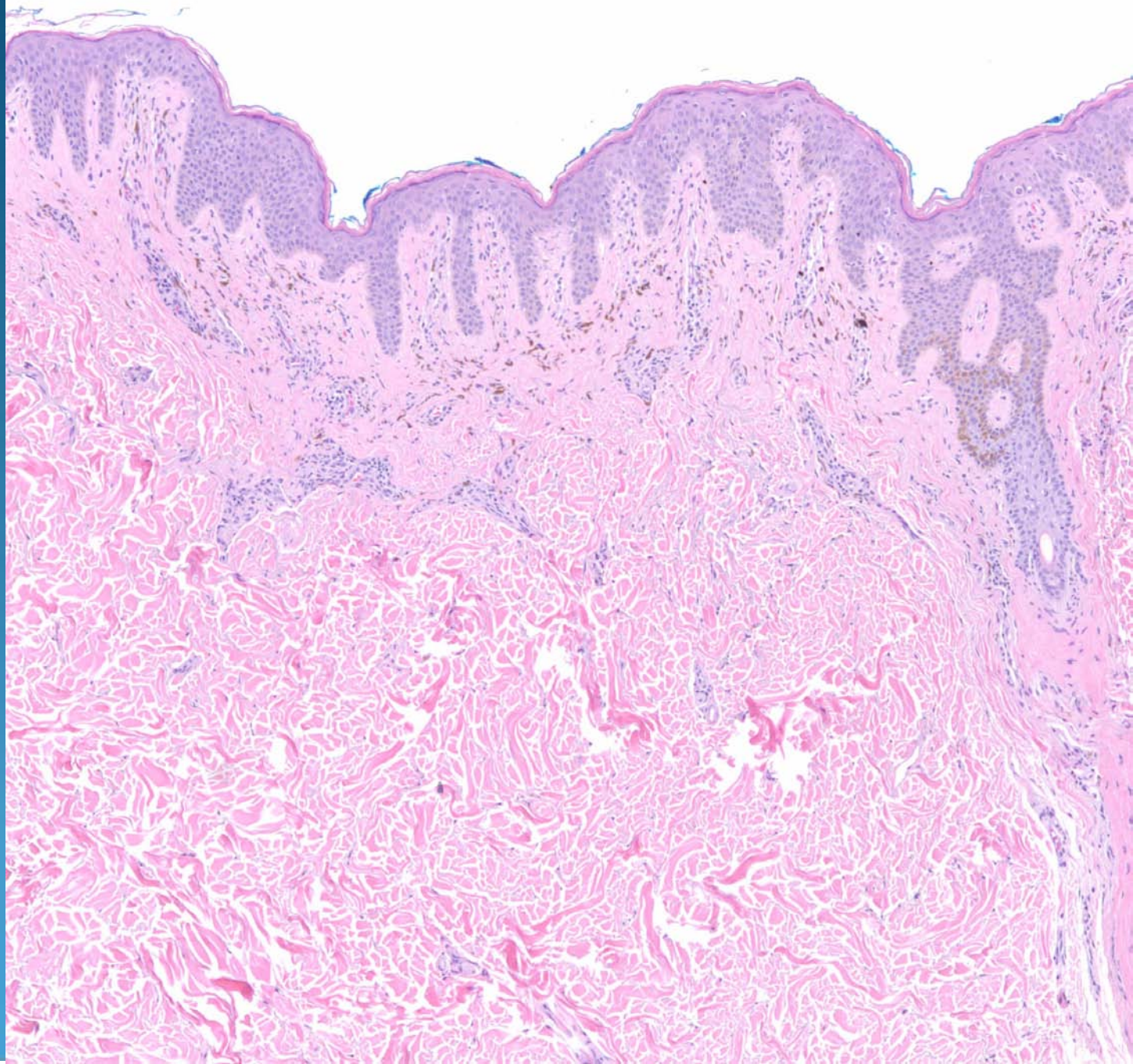
# Melanoma with Spitzoid Features



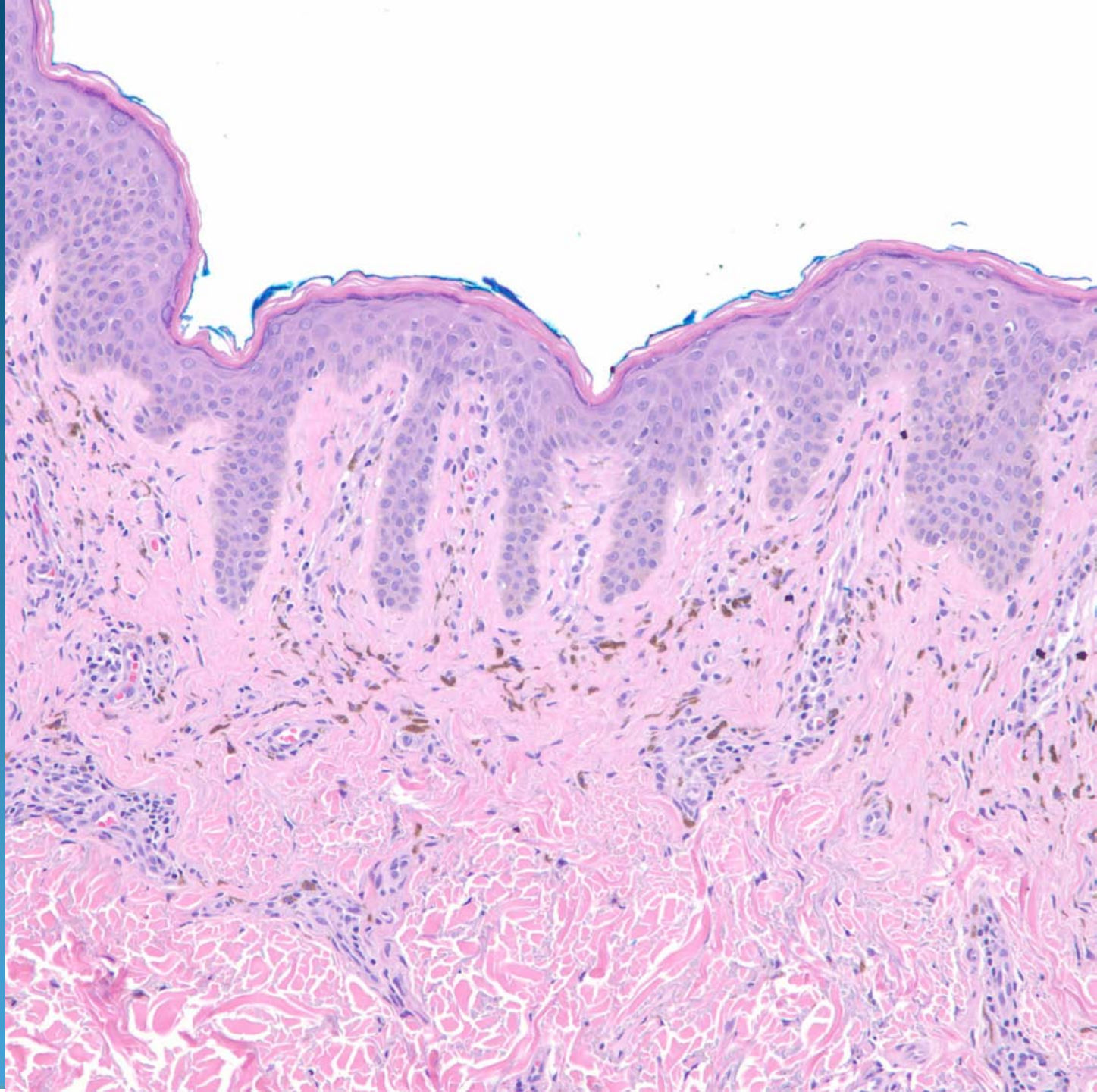
# Pearls



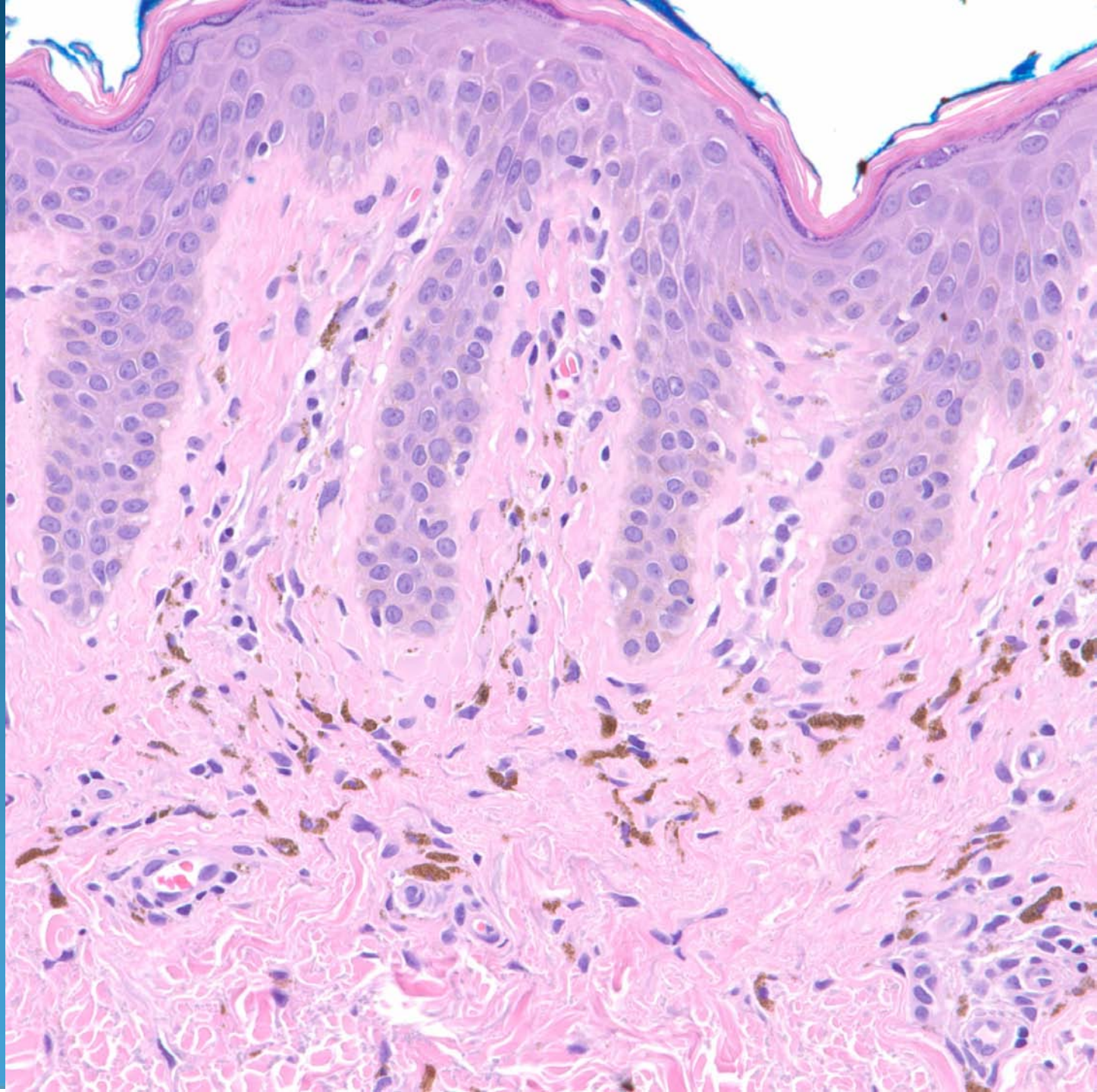
- Broad and asymmetrical melanocytic proliferation
- Epithelioid and spindled melanocytes
- No maturation and solid cohesive growth to base
- Look for mitotic figures in base of lesion



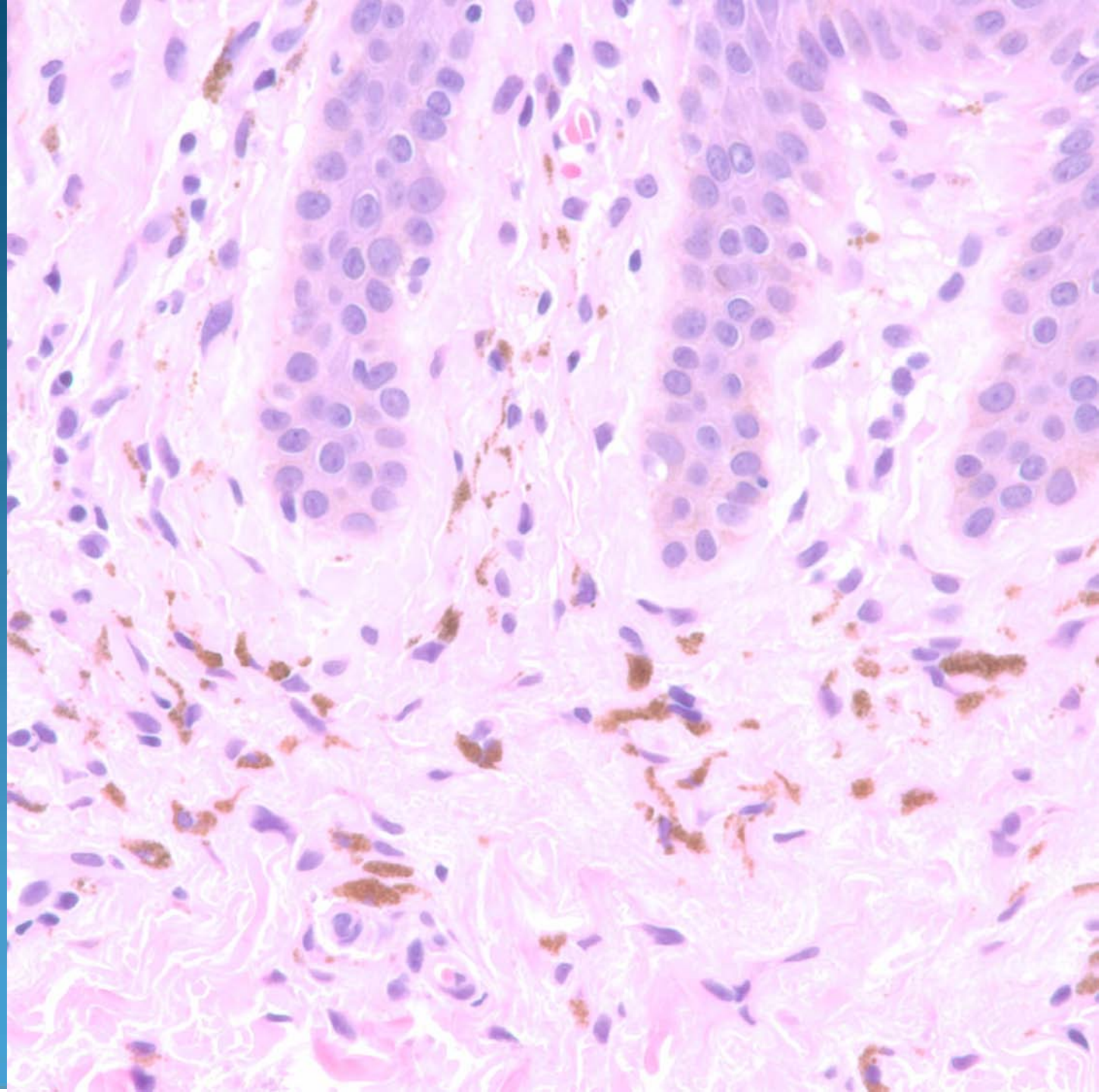








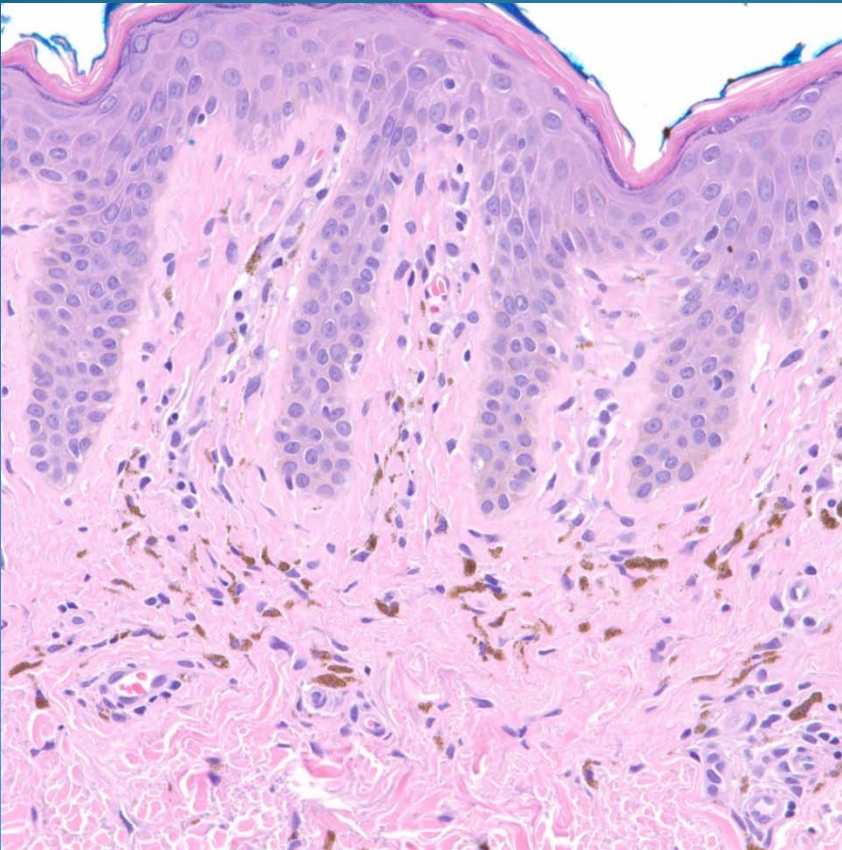




# Post-Inflammatory Pigmentary Alteration (Ashy Dermatitis)

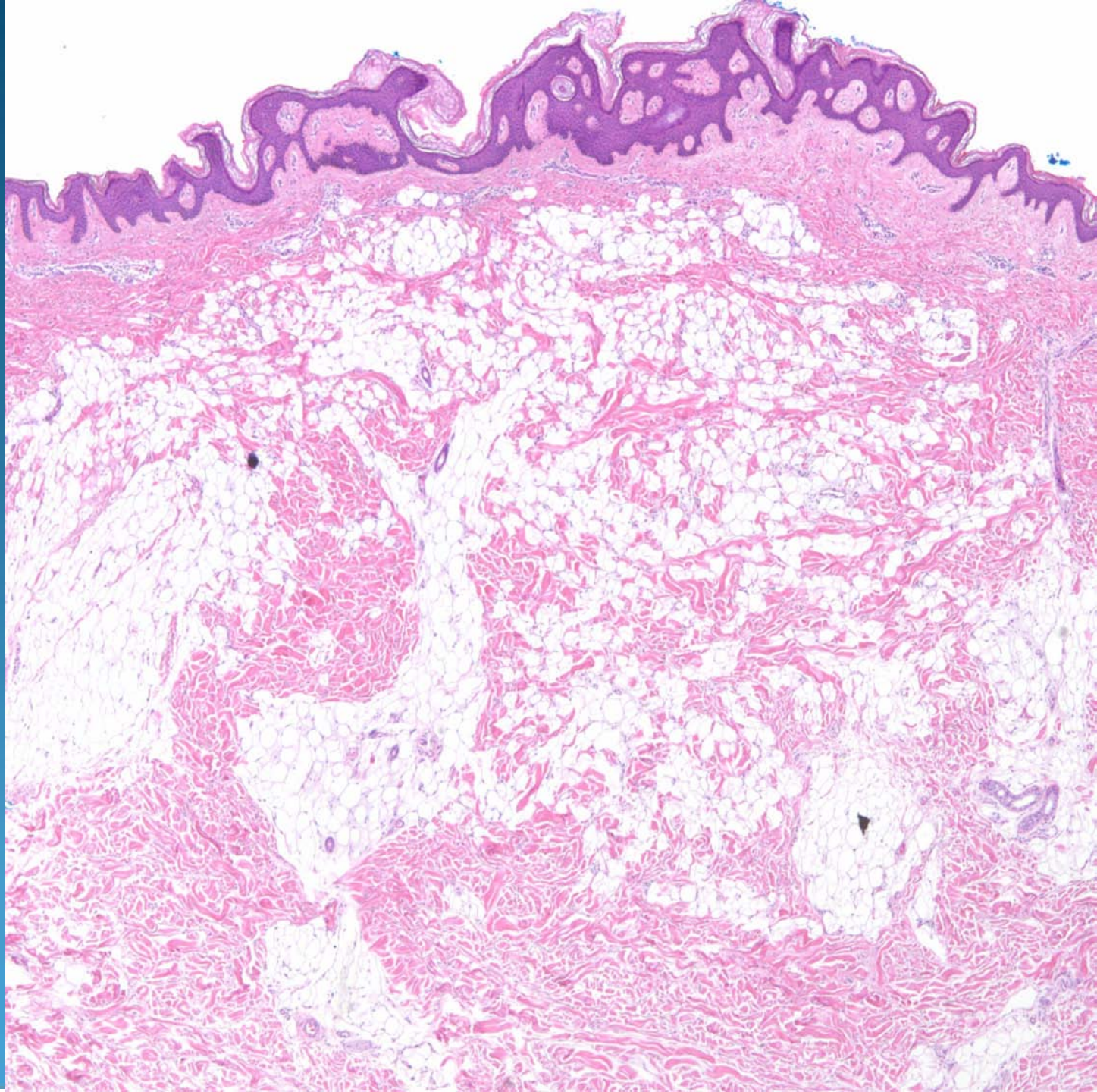


# Pearls

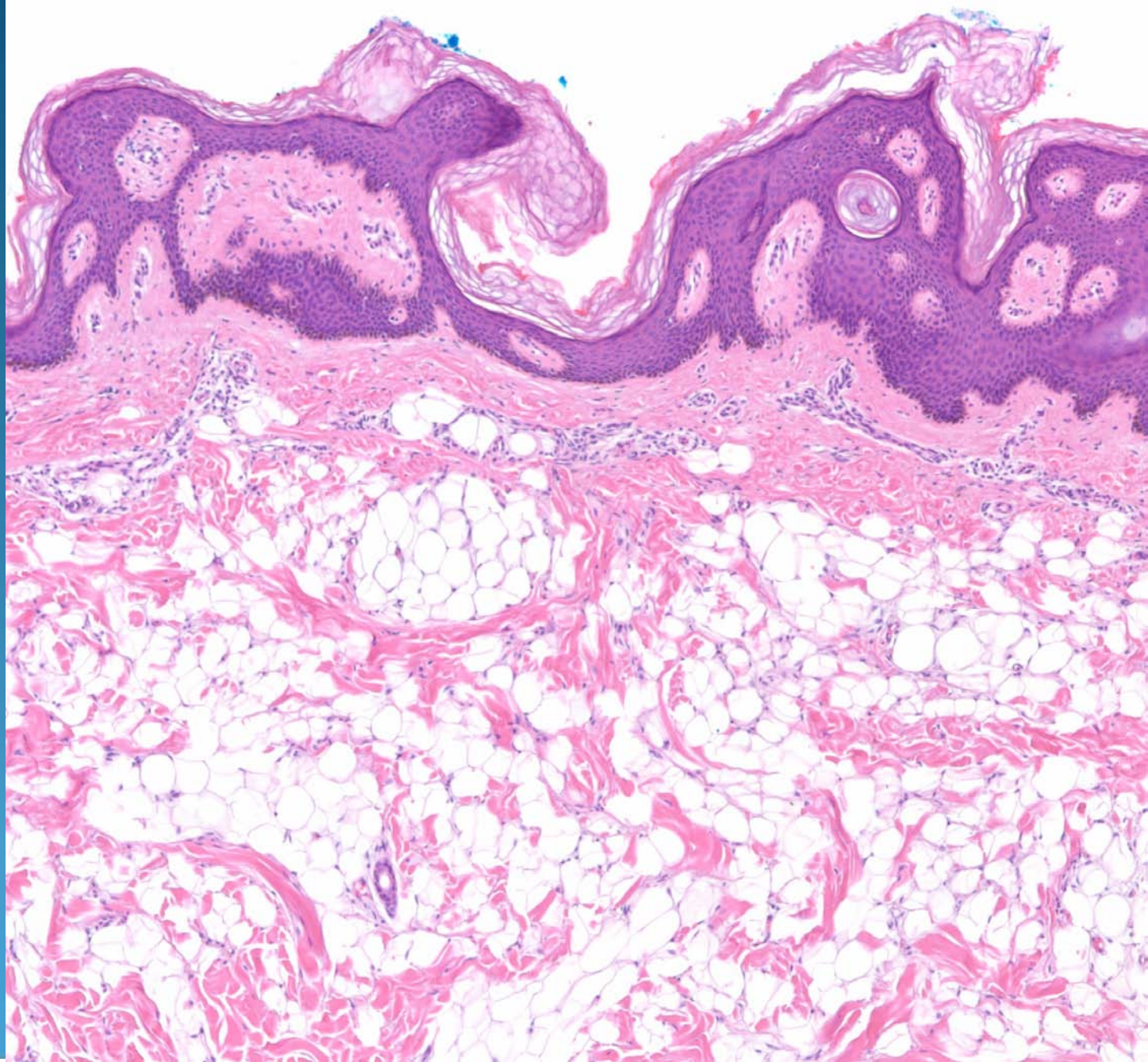


- Superficial Perivascular dermatitis with melanophages
- Rule out macular amyloidosis
- Clinical-pathological correlation

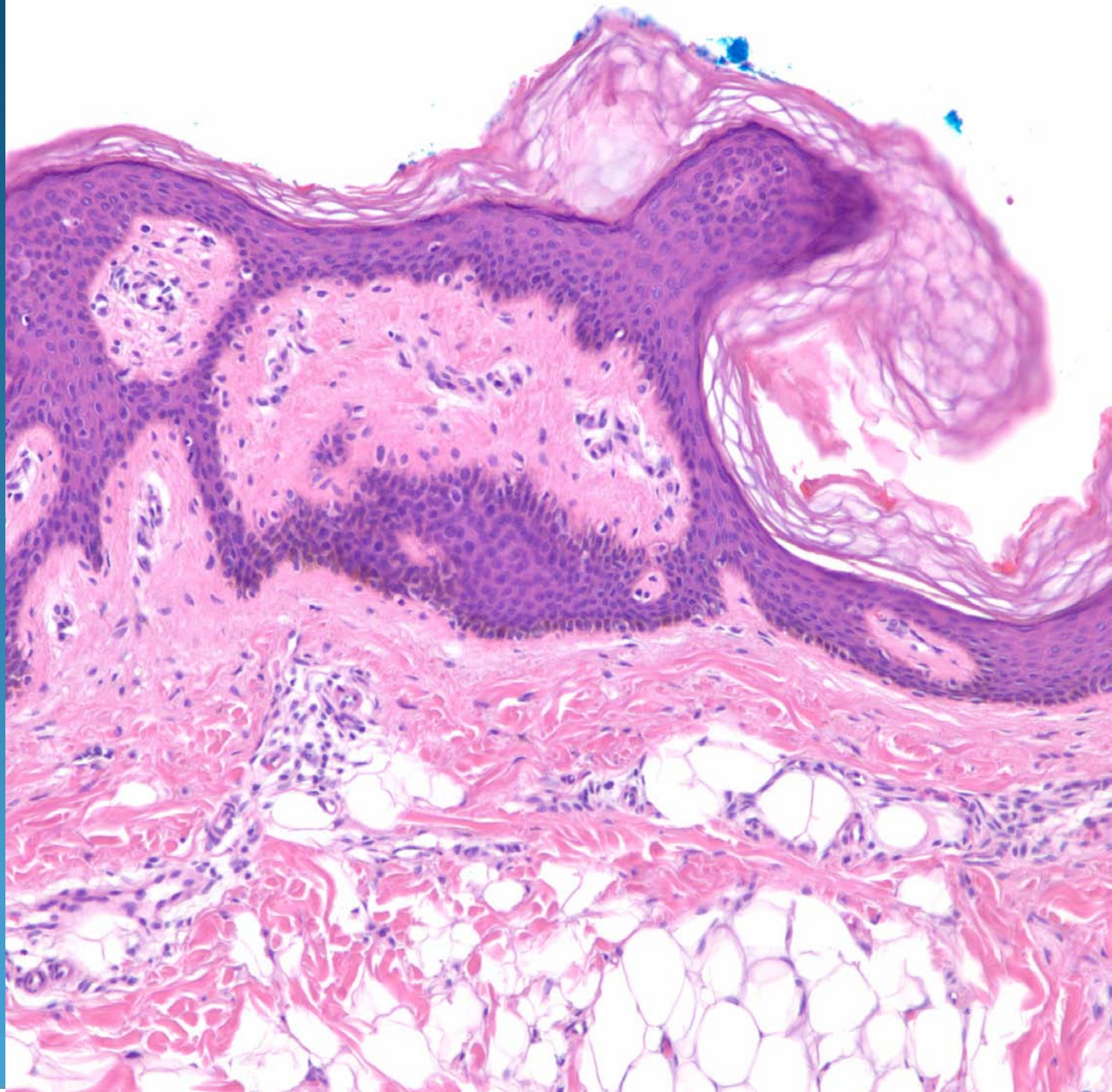




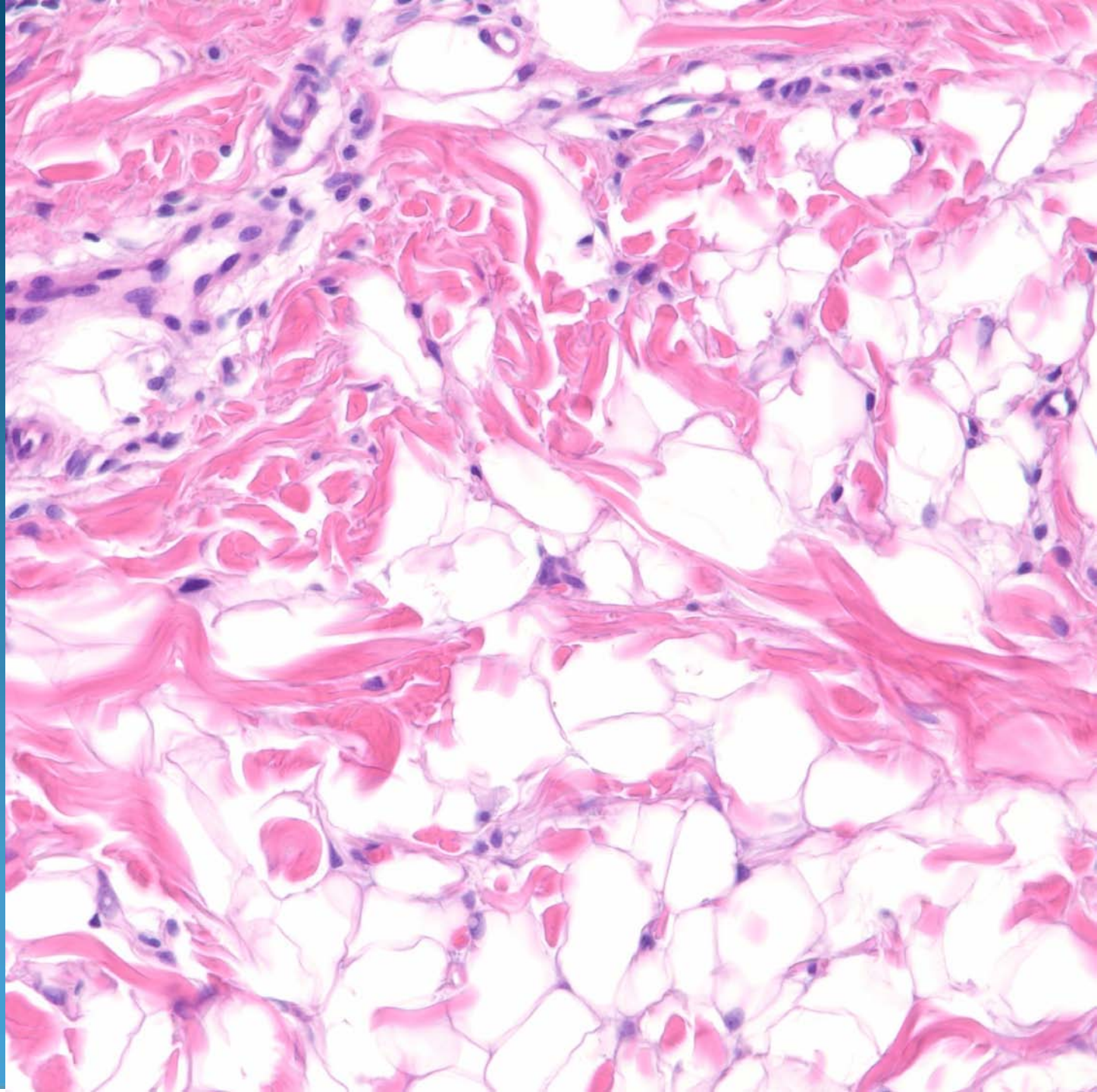








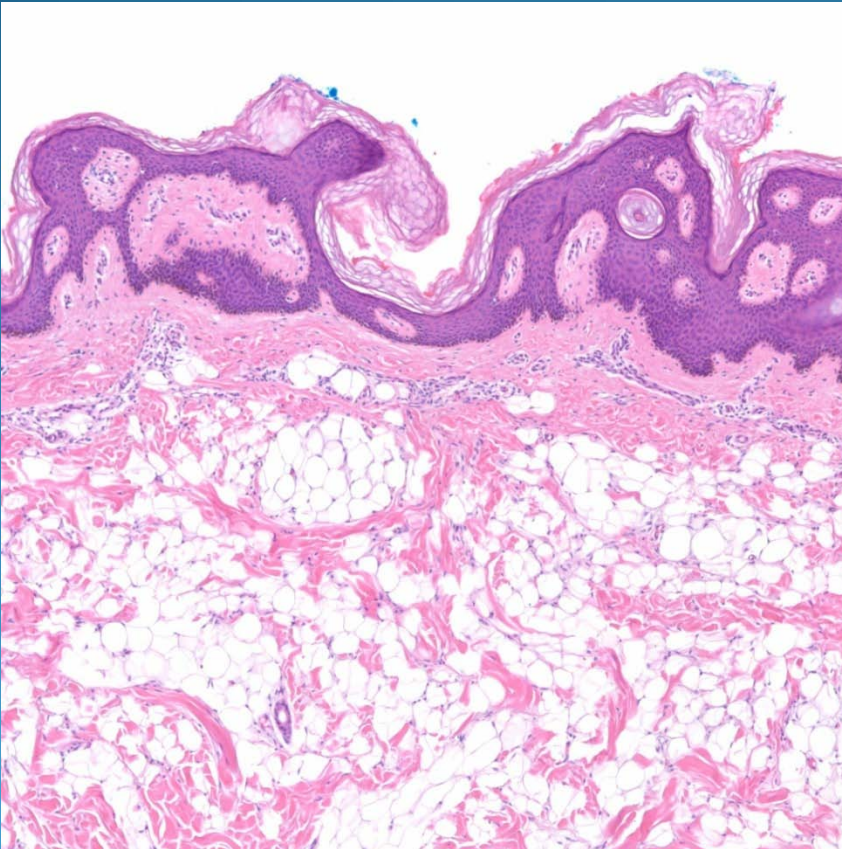




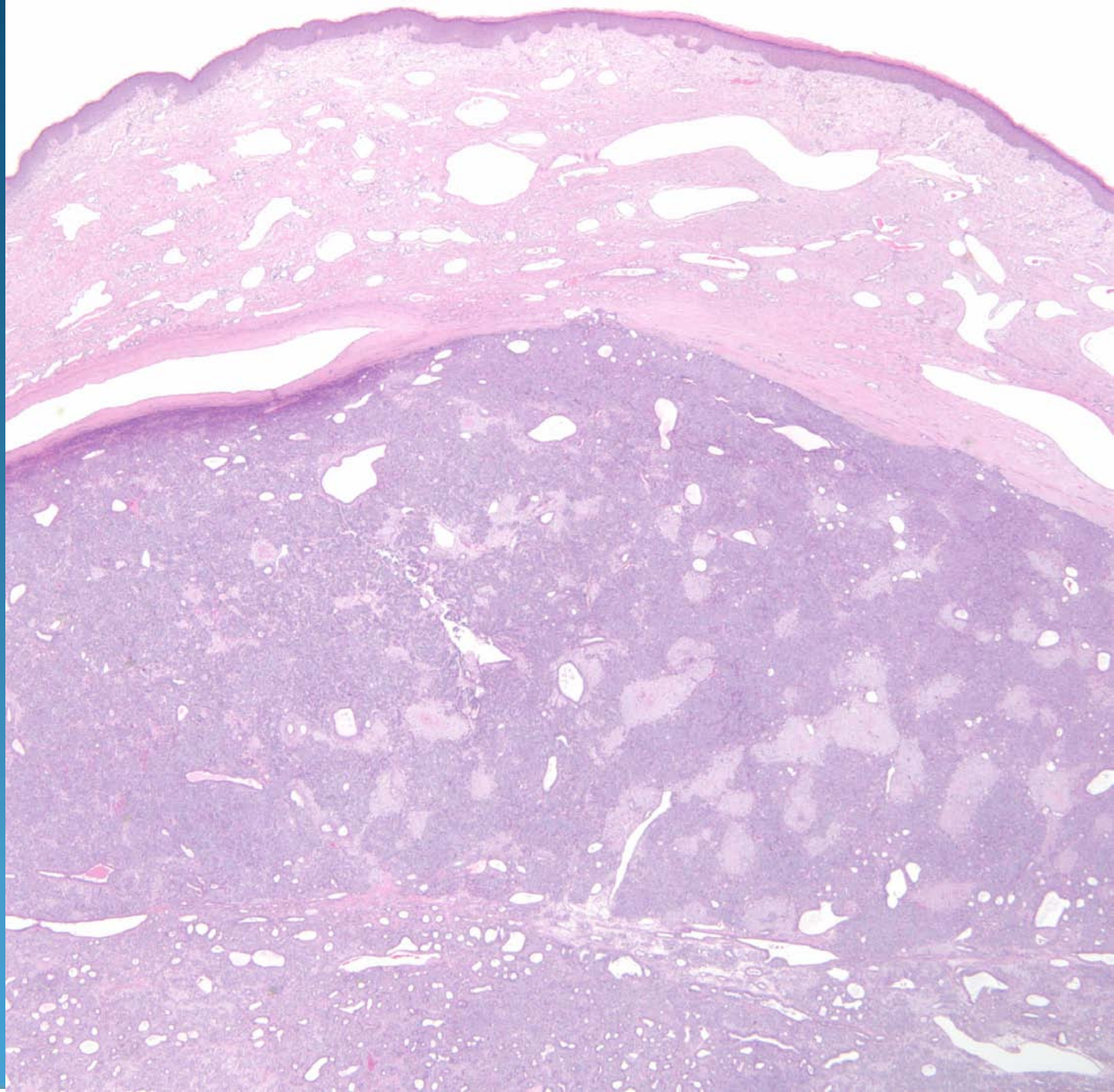
# Nevus Lipomatosis



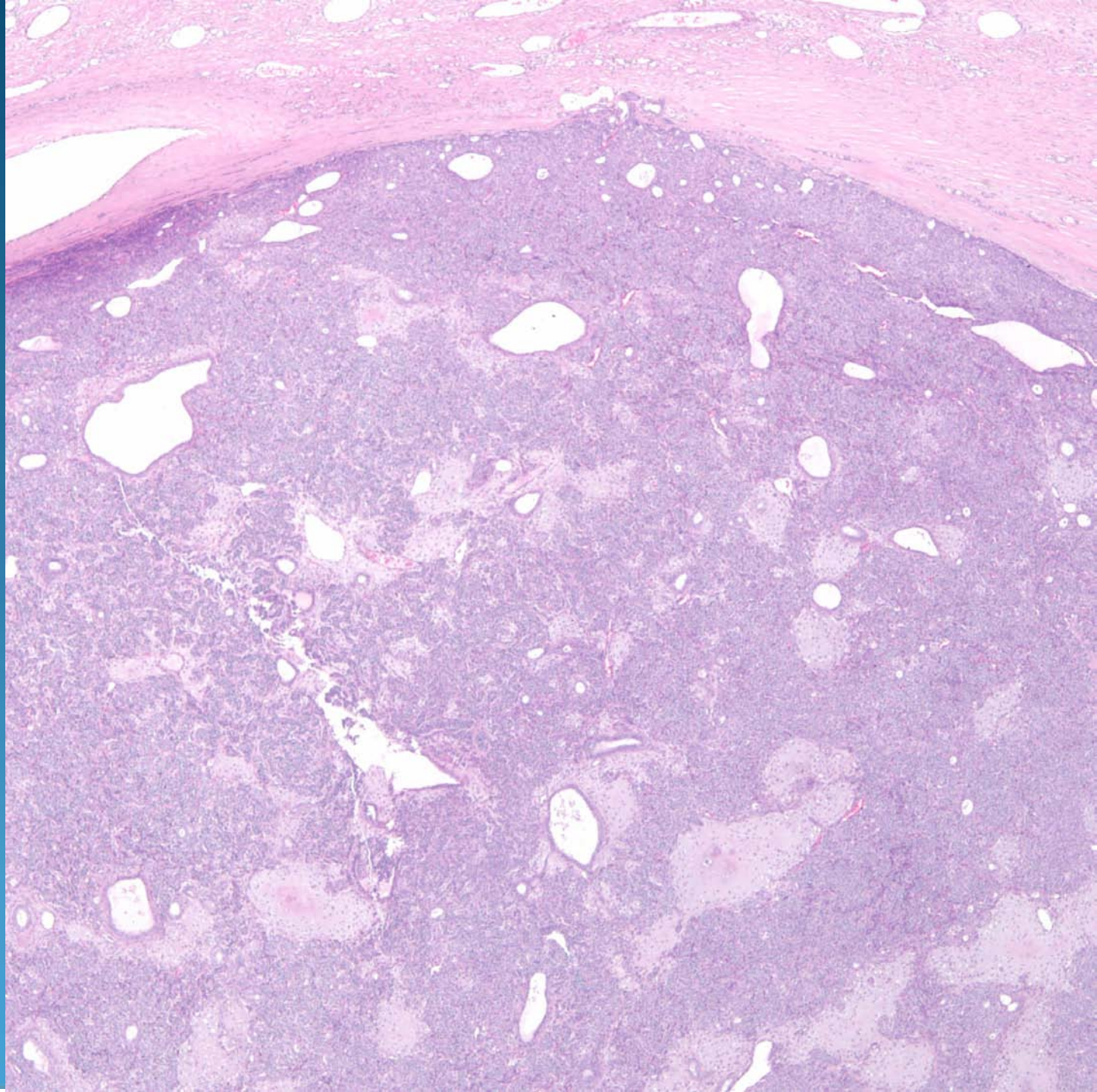
# Pearls



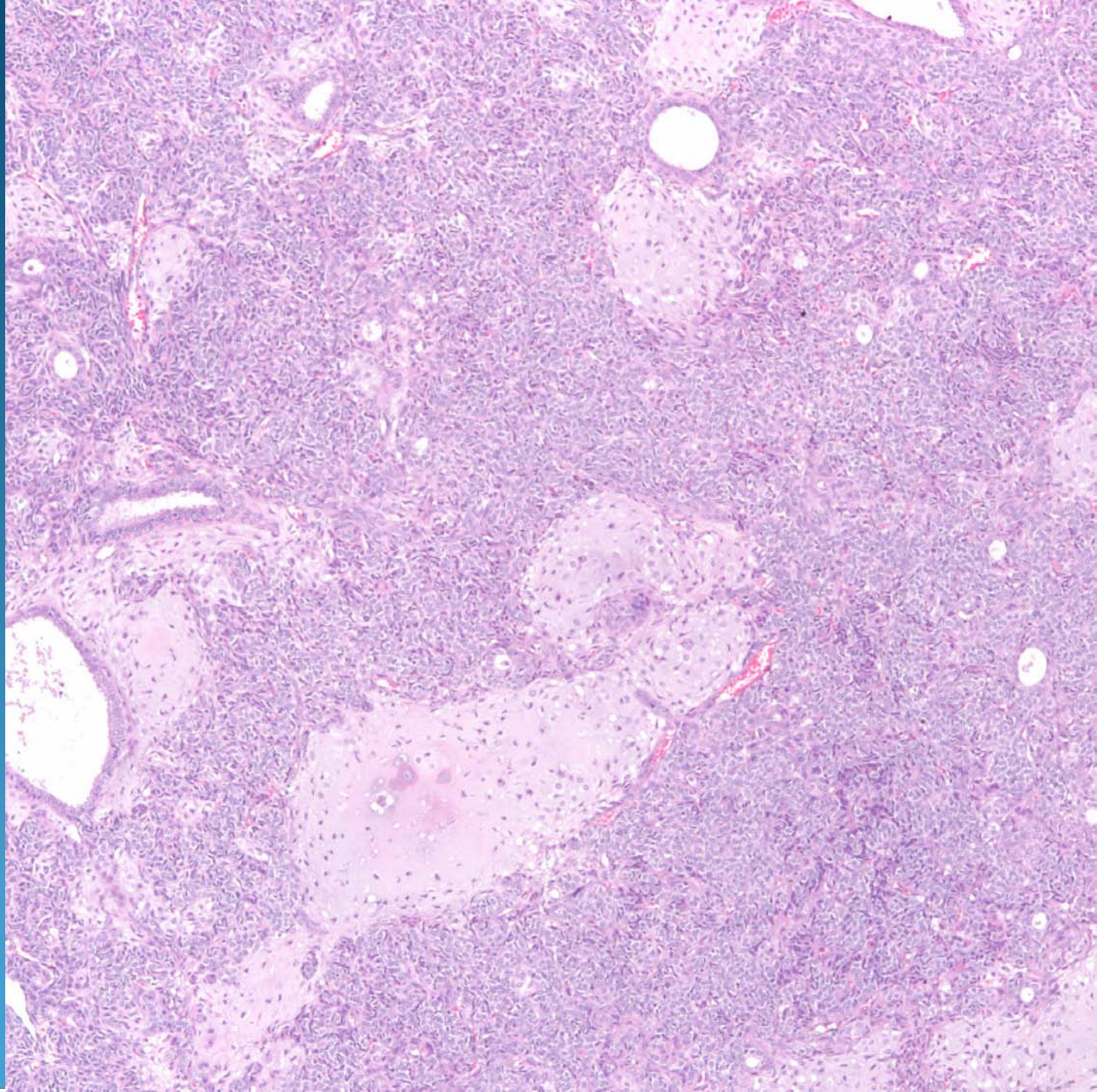
- Epidermal hyperplasia with papillomatosis
- Mature adipose tissue extending into papillary dermis



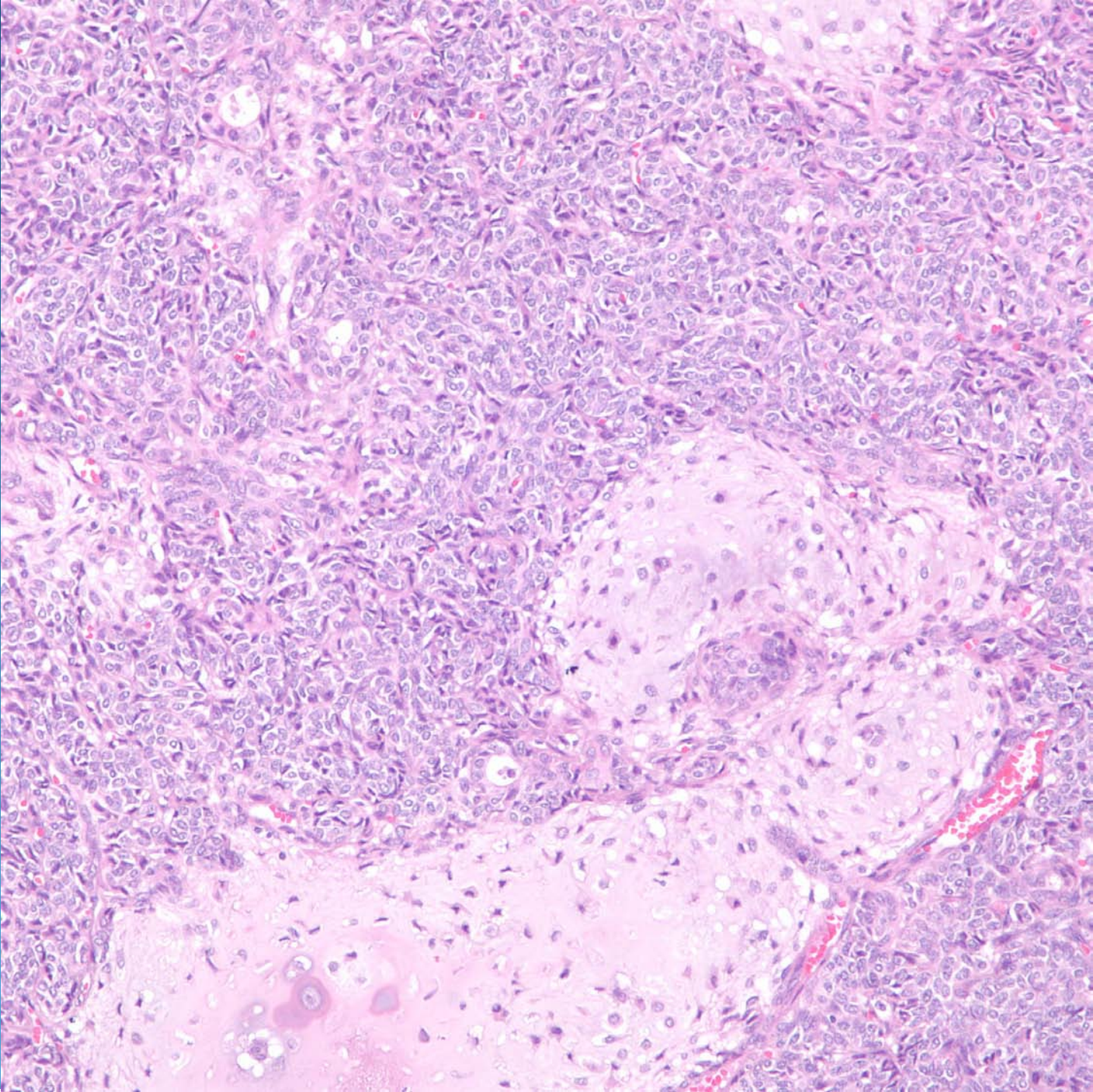




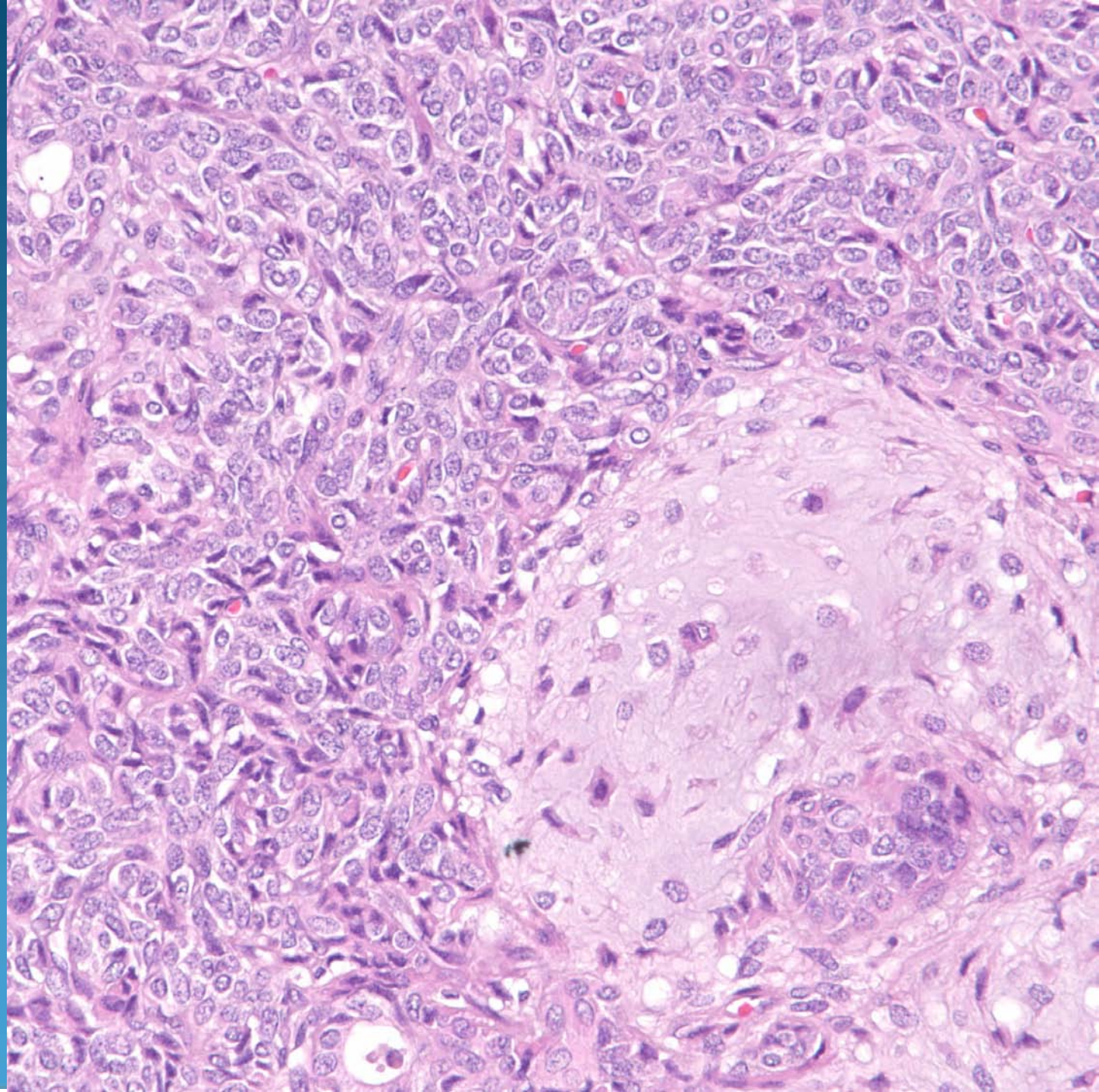










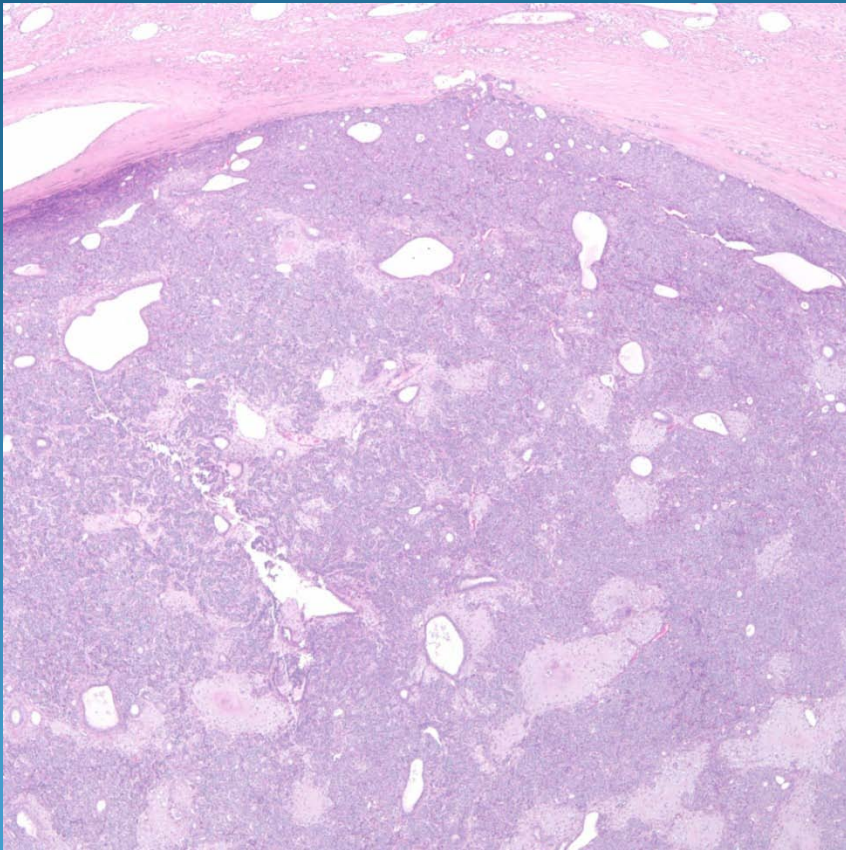




# Chondroid Syringoma

## (Benign Mixed Tumor of the Skin)

# Pearls



- Circumscribed cellular tumor with solid areas mixed with cysts and ducts
- Look for mucin and cartilage